

---

# REPEAT OFFENDER COMMISSION

---



2022 ANNUAL REPORT

The data and information contained herein has been collected by the Atlanta Repeat Offender Tracking Unit for the purpose of improving the function and transparency within the Fulton County Judicial system. Any errors, omissions or perceived biases are unintended.

# ATLANTA REPEAT OFFENDER COMMISSION

## **2022-2023 EXECUTIVE SUMMARY**

**APRIL 18, 2023**

The Atlanta Repeat Offender Commission was established by APF in 2015 to address the increasing issue of Repeat Offenders in the City of Atlanta. Crime in Atlanta often results from the repeated criminal acts of a relatively small number of individuals.

The Repeat Offender Initiative is a multifaceted strategy aimed at reducing the crime rate of repeat offenders in the city of Atlanta, while enhancing and creating a system of accountability and transparency for Atlanta's multi-jurisdictional criminal justice system. This private public partnership provides strategic support on various levels from technology and manpower to field intelligence and operational support.

The Commission formulated the Repeat Offender Tracking Unit (ROTU) in 2022 to execute the Commission's strategic objectives, while creating an atmosphere of collaboration. ROTU enables officials of the relevant city, county, state, and federal agencies to work in closer coordination, share relevant information in real time, and ultimately make the criminal justice system more efficient, thus making Atlanta a safer city.

The ROTU is comprised of members from the Atlanta Police Foundation (APF), Atlanta Police Department (APD), Fulton County District Attorney's Office, Fulton County Sheriff's Office, Fulton County's Superior and Magistrate Courts and Superior Court Administration, Fulton County Court Services Bureau, Georgia Department of Community Supervision, Georgia Bureau of Investigation (GBI), Fulton County Solicitor General's Office, Federal Bureau of Investigation (FBI), Atlanta City Council, Buckhead Coalition, and Midtown Alliance.

## **Repeat Offender Tracking Unit Contributors Include:**

Atlanta Police Department  
Fulton County Court Services Bureau  
Fulton County Sheriff's Office  
Fulton County District Attorney's Office  
Fulton County Magistrate Court  
Fulton County Superior Court  
Georgia Department of Community Supervision  
Fulton County Solicitor General's Office  
Superior Court Administration  
Atlanta City Council  
Atlanta Police Foundation  
Buckhead Coalition  
Georgia Bureau of Investigation  
Federal Bureau of Investigation  
Midtown Alliance

# ROTU 2022 ACCOMPLISHMENTS

## FIRST YEAR RESULTS

- Created and maintained the Atlanta Police Information Network (APIN) database
- Established 1,500+ Repeat Offender (RO) profiles, provided to law enforcement and the judicial system to properly prosecute ROs
- Created a one-stop data shop for prosecutors, enabling their access to accurate, timely, and comprehensive information on defendants
- Conducted intensive analyses of the Atlanta Police Department's (APD) 2022 felony arrests to identify crime trends and track the participation of repeat offenders in the city's most serious crimes
- Identified 889 individual repeat offenders that account for 1,000 different felony cases
- Utilized geospatial mapping technology to determine repeat offender hotspots
- Determined that 26% of APD's 2022 felony arrests were committed by a repeat offender

## COLLABORATION WITH AGENCIES WITHIN CRIMINAL JUSTICE SYSTEM

- Identified and corrected incomplete or missing Georgia Crime Information Center (GCIC) records
- Produced a Repeat Offender Flag within the Fulton County District Attorney's Office to help prosecutors readily identify ROs in the court system and subsequently flagged over 1,500 ROs
- Launched Fulton County Sheriff's Office (FCSO) Fugitive Apprehension Support Team (F.A.S.T.) with 10 Sheriff's Deputies with a specific concentration on repeat offender crime
- Expanded the State-Wide Digital Criminal History Database for ROs to give other jurisdictions in Georgia additional RO intelligence via APIN upon ROTU's receipt of alert of external RO arrests

## CREATED A SYSTEM OF ACCOUNTABILITY AND TRANSPARENCY IN ATLANTA'S CRIMINAL JUSTICE SYSTEM

- Established Court Watch, a program administered by the Fulton County District Attorney's Office. It is designed to provide greater transparency into and community awareness of how the Fulton County criminal justice system operates. Qualified volunteers monitor court hearings and provide reports and feedback on court proceedings. The program was inaugurated in June 2022.
  - o Since its beginning...
    - 390 citizens applied to the program
    - 136 passed background checks
    - 126 were formally empaneled as Court Watch volunteers
    - From September – December 2022, Court Watch volunteers observed 20 different cases
- Created Judges Participation Report that gives transparency to citizens on sentencing judges' sentencing decisions

# REPEAT OFFENDER 2022 DATA

## WHAT IS A REPEAT OFFENDER?

A repeat offender is a person who has three prior felony convictions in Georgia or three prior felony convictions in other states for crimes that would be felonies if committed within this state.

**26% OF APD FELONY ARRESTS IN 2022 WERE COMMITTED BY A REPEAT OFFENDER. (COMPARED TO 30% IN 2021).**

**889 INDIVIDUAL REPEAT OFFENDERS ACCOUNTED FOR 1,000 DIFFERENT FELONY CASES.**

- 375 Drug Related Cases
- 179 Larceny (Taking / Receiving / Auto / Entering Auto) Cases
- 124 Aggravated (Assault / Battery / Stalking) Cases
- 92 Felons with Firearms Cases
- 87 Burglary Cases
- 32 Robbery (Armed / Unarmed) Cases
- 21 Murder / Sex Offense Cases
- 90 Other Cases

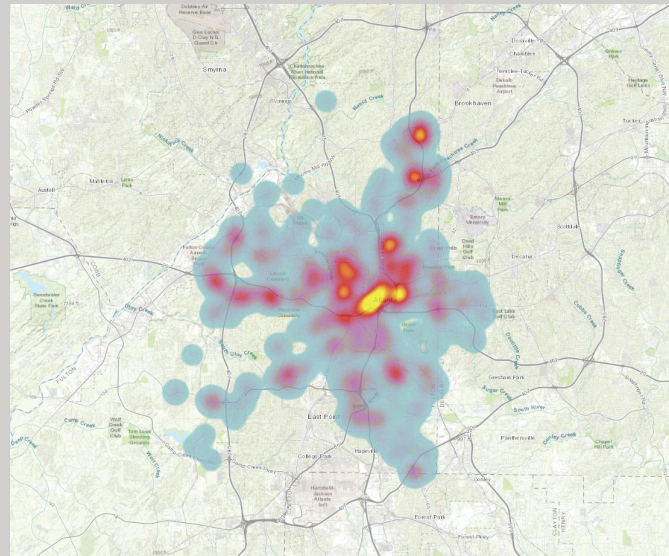


Figure 1. Geospatial map depicting concentration of repeat offender crime in Atlanta in 2022.

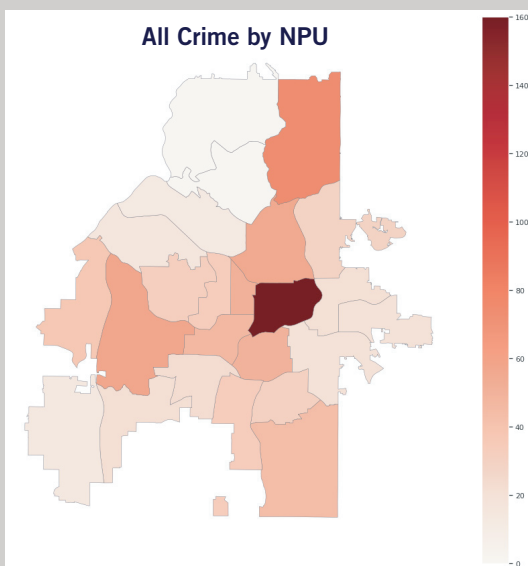
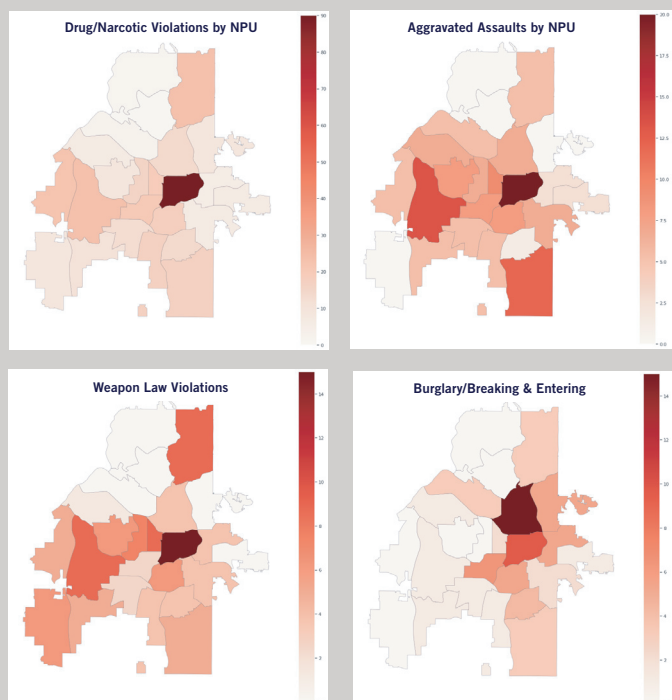


Figure 2. Heat maps portraying prevalence of specific crime according to Neighborhood Planning Units (NPUs.)

Violations are plotted by NPU.



# REPEAT OFFENDER ARREST (ROA)

THIS DATA WAS COLLECTED FROM JANUARY 2022 – DECEMBER 2022.  
ALL OFFENDERS HAVE 3 OR MORE FELONY CONVICTIONS.

## 1,000 FELONY ARREST CASES.

### ZONE 1 (207 ROA / 21%)

- 36% Drugs
- 15% Felon w/ Firearm
- 15% Agg Assault / Battery / Stalking
- 8% Auto Theft / Receiving / Taking
- 5% Larceny
- 5% Other
- 4% Burglary
- ≤3% Robbery, Entering Auto, Murder, Shoplifting

### ZONE 2 (113 ROA / 11%)

- 34% Drugs
- 24% Shoplifting
- 8% Auto Theft
- 8% Burglary
- 8% Other
- 6% Felon w/ Firearm
- 5% Agg Assault / Battery / Stalking
- 5% Larceny
- ≤1% Robbery & Entering Auto

### ZONE 3 (180 ROA / 18%)

- 37% Drugs
- 15% Agg Assault / Battery / Stalking
- 11% Burglary
- 11% Other
- 8% Larceny
- 7% Felon w/ Firearm
- 5% Auto Theft / Receiving / Taking
- ≤3% Shoplifting, Entering Auto, Robbery, Murder, Sex Offenses

### ZONE 4 (153 ROA / 15%)

- 40% Drugs
- 16% Felon w/ Firearm
- 12% Agg Assault / Battery / Stalking
- 8% Other
- 6% Robbery
- 4% Burglary
- 4% Murder
- ≤3% Larceny, Entering Auto, Sex Offenses

### ZONE 5 (201 ROA / 20%)

- 40% Drugs
- 15% Burglary
- 13% Agg Assault / Battery / Stalking
- 8% Other
- 6% Felon w/ Firearm
- 5% Robbery
- 4% Entering Auto
- 4% Auto Theft / Receiving
- 4% Larceny
- ≤1% Murder & Sex Offenses

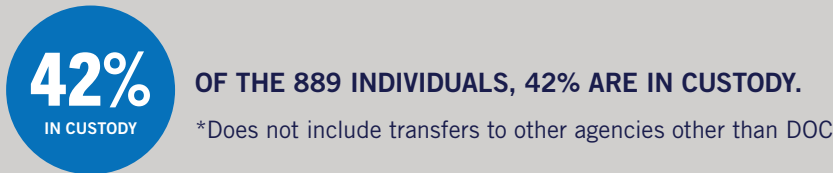
### ZONE 6 (146 ROA / 15%)

- 39% Drugs
- 12% Agg Assault / Battery / Stalking
- 11% Other
- 10% Burglary
- 8% Entering Auto
- 5% Felon w/ firearm
- 5% Auto Theft / Receiving
- 5% Shoplifting
- ≤2% Murder, Robbery, Larceny



# REPEAT OFFENDERS IN CUSTODY

## IN CUSTODY NUMBERS:



## PERCENTAGE IN CUSTODY

- 95% Murder & Sex Offenses
- 77% Robbery
- 72% Burglary
- 70% Aggravated Assault w/ Gun
- 60% Entering Auto
- 57% Aggravated Assault (Other) / Stalking / Battery
- 47% Other
- 37% Larceny
- 36% Auto Theft / Receiving / Other
- 30% Felon w/ Firearm
- 25% Drug Transaction / Distribution / Possession

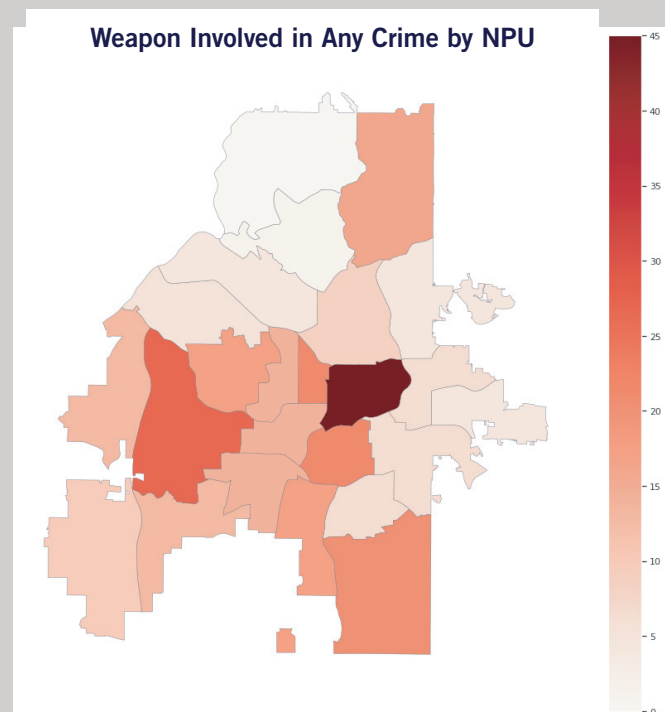
# DRUGS AND GUNS

## INVOLVEMENT OF FIREARMS IN DRUG CASES

- 32% of all drug cases involve the possession of a firearm.
- 52% of drug cases with intent to distribute / distribution / trafficking involved the possession of a firearm.

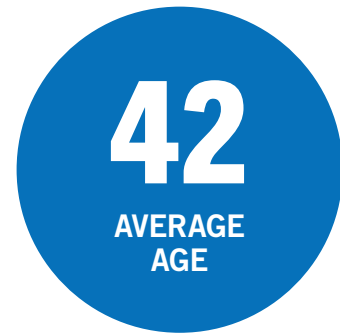
## INVOLVEMENT OF FIREARMS IN ALL CASES

- 33% of ALL cases involve a firearm.





# REPEAT OFFENDERS BY THE NUMBERS



## OVERALL STATISTICS FROM 1,000 CASES

### DEMOGRAPHICS

#### AFRICAN AMERICAN REPEAT OFFENDERS ACCOUNTED FOR 934 CASES (93%)

- African American males accounted for 896 of the 934 cases (96%).
- African American females accounted for 38 of the 934 cases (4%).

#### WHITE REPEAT OFFENDERS ACCOUNTED FOR 63 CASES (6%)

- White males accounted for 60 of the 63 cases (95%).
- White females accounted for 3 of the 63 cases (5%).

#### ASIAN / HISPANIC REPEAT OFFENDERS ACCOUNTED FOR 3 CASES (<1%)

- Asian / Hispanic males accounted for 3 of the 3 cases (100%).

#### AGES 18-35: 311 / 31%

- Ages 18-25: 37 / 4%
- Ages 26-35: 274 / 27%

#### AGES 36-45: 352 / 35%

#### AGES 46 AND UP: 337 / 34%

- Ages 46-55: 177 / 18%
- Ages 56-up: 160 / 16%

## AVERAGE REPEAT OFFENDER CRIMINAL PROFILE



REPEAT OFFENDERS WITH  
ACTIVE WARRANTS IDENTIFIED  
BY THE FULTON COUNTY  
SHERIFF'S OFFICE

**RECIDIVISTS BEING HELD WITHOUT BOND** - Increased by over 50% from 2021 to 2022. (March-January)

# REPEAT OFFENDER ADJUDICATION REPORT

Criminal cases are randomly assigned and can vary significantly in type and complexity. The information presented in the judges participation report is aggregate, and is not intended to connect or compare the specific repeat offender crimes to sentencing outcomes.

Judges consider various factors when imposing a sentence in a criminal case, including the defendant's criminal history, the facts and circumstances of the particular case, the importance of deterrence, and the value of rehabilitation. Sentencing ranges are set by Georgia statute and are designed to be proportional to the severity of the offense. Judges may also consider sentencing recommendations made by the prosecution, including those associated with plea agreements.

## GEORGIA 17-10-7 PUNISHMENT OF REPEAT OFFENDERS

Georgia Statute 17-10-7 states that any person convicted of a felony offense in this state or having been convicted under the laws of any other state or of the United States of a crime which if committed within this state would be a felony and sentenced to confinement in a penal institution, who shall afterwards commit a felony punishable by confinement in a penal institution, shall be sentenced to undergo the longest period of time prescribed for the punishment of the subsequent offense of which he or she stands convicted, provided that, unless otherwise provided by law, the trial judge may, in his or her discretion, probate or suspend the maximum sentence prescribed for the offense.

## DEFINITIONS

**Repeat Offender (RO)** - A repeat offender is any person who has been previously convicted for felonies three times under the laws of Georgia or under the laws of any other states/the United States for crimes that would be considered felonies if committed in Georgia.

**Combination Sentence** - A form of punishment in which an offender's sentence is a combination of confinement, time served, suspended, and probation or any combination thereof.

**Nolle Prosequi** - The state's formal action on its decision to not further prosecute an indictment.

**Dead Docket** - A procedural device used by the prosecution to postpone a case indefinitely; it may be reinstated any time at the pleasure of the court. This does NOT signify a dismissal or a termination of the prosecution in the accused's favor.

**Complex Cases** - Assigned to Superior Court Judges; include but are not limited to: Treason, Murder, Rape, Aggravated Sodomy, Armed Robbery, Aircraft & Motor Vehicle Hijacking, All Child Molestation, Aggravated Sexual Battery, Manufacturing & Trafficking Controlled Substances, Kidnapping, Burglary, Arson, Aggravated Assault, Aggravated Battery, Aggravated Stalking, any other Felony Sexual Offenses, and any felony involving the use of firearms. Also, any case involving a defendant with three or more prior felony convictions is classified as a Complex Case, regardless of the charges.

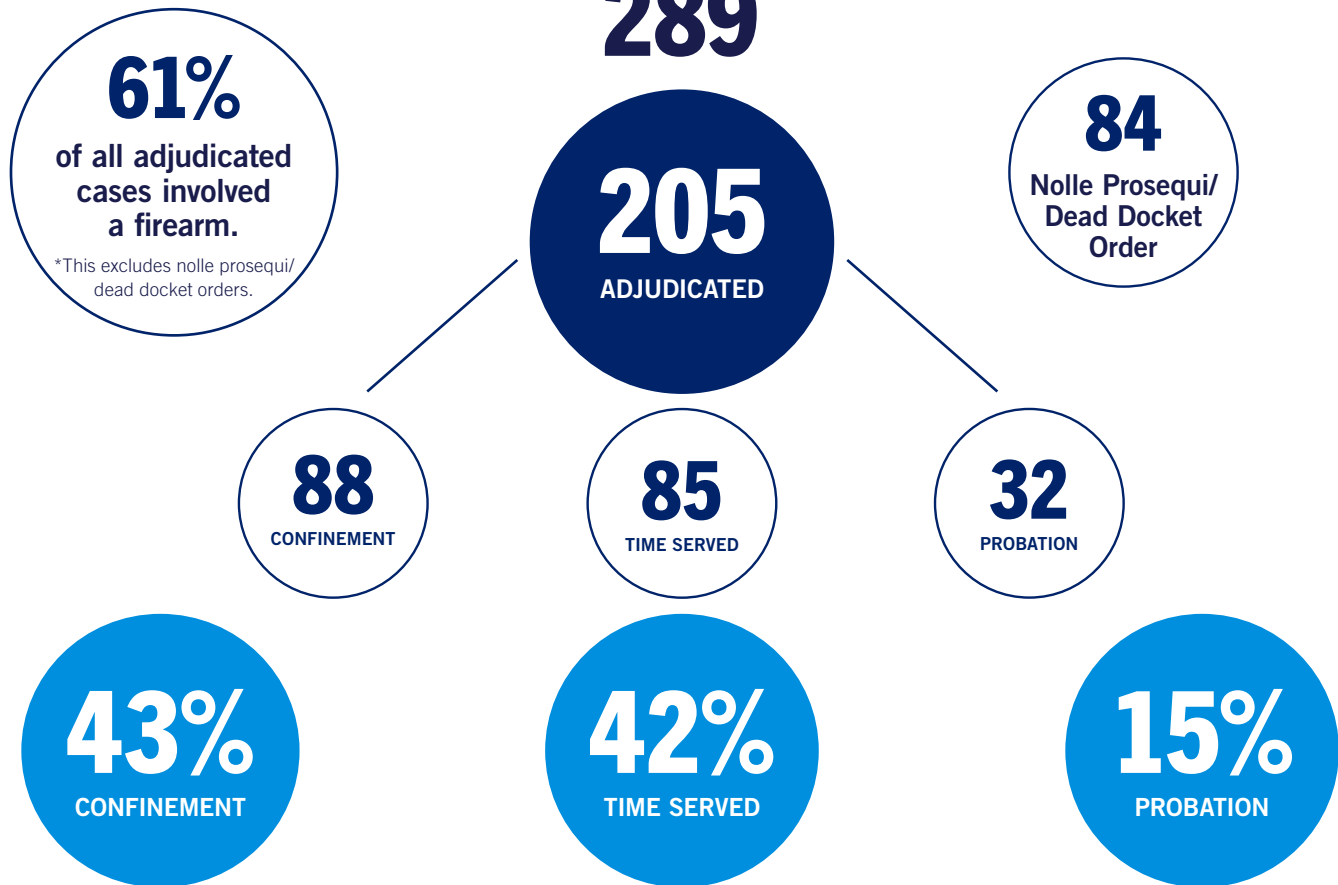
**Non-Complex Cases** - Assigned to Magistrate and/or Superior Court Judges; generally, involve all other felonies, unless the facts and circumstances of the case make it unduly complex, in which case the District Attorney can petition Superior Court to consider a transfer to the Complex Division.

**Other Category** - Cases falling within Major Crimes, Non-Capital Felony, or Unknown divisions.

# REPEAT OFFENDER ADJUDICATION REPORT - SENTENCING HIGHLIGHTS

GRAND TOTAL OF 2022 APD RO CASES SEEN IN COURT:

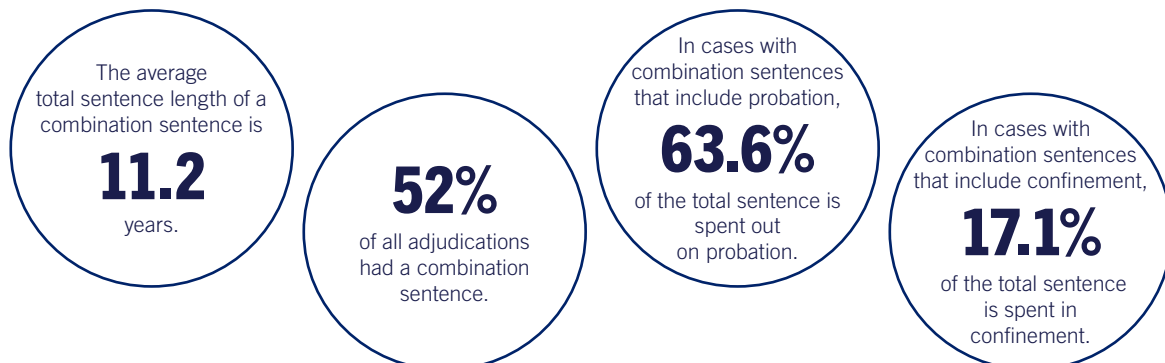
**289**



\*Typically, a sentence will include some sort of combination.

\*\*Percentages calculated do not include Nolle Prosequi/Dead Docket Orders.

## REPEAT OFFENDER ADJUDICATION REPORT - COMBINATION SENTENCING



# JUDGES PARTICI

## APD REPEAT OFFENDER

(JANUARY- DECEMBER 2022)

### SENTENCING BREAKDOWN

FULTON COUNTY SUPERIOR COURT JUDGE	TOTAL ADJUDICATED RO 2022	CONFINEMENT	TIME SERVED	PROBATION	NOL PROS/ DEAD DOCKET	AVERAGE TIME SERVED PRE-TRIAL (IN YEARS)	PERCENT CONFINEMENT
ADAMS, KIMBERLY	18	10	3	0	5	2	77%
BARWICK, JANE	19	1	9	1	8	1	9%
CARNSALE, RACHELLE	22	7	9	3	3	2	37%
COX, THOMAS	19	6	9	1	3	2	38%
DUNAWAY, ERIC	18	13	2	1	2	2	81%
EATON, CHARLES	28	6	12	0	10	2	33%
EDWARDS, BELINDA	16	0	6	2	8	2	0%
ELLERBE, KELLY	10	1	3	3	3	2	14%
GLANVILLE, URAL	20	7	5	2	6	2	50%
INGRAM, SHAKURA	17	11	0	2	4	0	85%
KRAUSE, RACHEL	21	3	6	4	8	3	23%
LEFTRIDGE, MELYNNE	22	3	6	4	9	2	23%
MCBURNEY, ROBERT	16	8	2	0	6	1	80%
RICHARDSON, EMILY	11	1	5	4	1	2	10%
SCHWALL, CRAIG	9	1	5	1	2	2	14%
WHITAKER, PAIGE	23	10	3	4	6	1	59%

**Confinement** is defined here as a case containing any length of confinement within the sentence, whether exclusive or partial.

**Time Served** is defined here as a case containing any length of time served within the sentence, whether exclusive or partial.

**Probation** is defined here as a case containing any length of probation within the sentence, whether exclusive or partial.

**Percent Confinement** does NOT include cases that did not proceed as a result of nolle prosequi or dead docket order.

# SENTENCING REPORT

## SENTENCING 2022

INCARCERATION BREAKDOWN				COURT TYPE		
TOTAL PENALTY TIME ASSIGNED (IN YEARS)	TOTAL JAIL TIME (IN YEARS)	AVERAGE TIME ASSIGNED TO JAIL PER OFFENDER (IN YEARS)	AVERAGE % OF SENTENCE ASSIGNED TO JAIL	TOTAL COMPLEX	TOTAL NON-COMPLEX	OTHER
101	55	4	54%	16	1	1
71	23	2	32%	19	0	0
237	79.5	12	34%	19	3	0
126	39	3	31%	18	1	0
238	110.5	7	46%	17	1	0
259	54	3	21%	23	5	0
25	8	1	32%	16	0	0
40	4.2	1	11%	10	0	0
149	57	5	38%	19	1	0
147	70.2	6	48%	16	1	0
139.6	34.5	4	25%	21	0	0
150	64	7	43%	19	2	1
140.2	100.4	10	72%	14	1	1
101	58	10	57%	7	3	1
46	11.8	2	26%	8	0	1
149	22	4	17%	20	2	1

84 of the 289 cases (29%) did not proceed further due to nolle prosequi or dead docket orders.

Cases with combination sentences are categorized according to the most severe punishment within the sentence. Severity is determined by the following order, from most to least severe: confinement, time served, probation.

Unknown cases are categorized under nolle prosequi.



**The Fulton County District Attorney's Office** is offering you an exciting opportunity to join Atlanta CourtWatch.

As a voluntary team member, you will peer into the workings of the Fulton County Courts to determine that justice is being pursued fairly and efficiently.

Volunteers will be trained on the Criminal Justice System, and will closely monitor court cases to ensure a productive judicial performance is being served. This free program will foster accountability, aid in public trust, and will focus on repeat offenders in an effort to reduce crime in our community.



  
Fani T. Willis  
Fulton County District Attorney

# **THE ATLANTA POLICE FOUNDATION**

## **MAKING ATLANTA THE SAFEST LARGE CITY IN THE NATION**

- The Atlanta Police Foundation is an independent non-profit organization that provides strategic planning, public safety infrastructure investment, innovative technology, career-long law enforcement training, and variety of community programs designed to assist the Atlanta Police Department in its mission to make Atlanta a safer city.
- APF employs a broad array of 21st century public safety initiatives to accomplish its mission. These initiatives include community programs designed to provide resources to underserved neighborhoods, as well as training to cultivate a mindset of true servanthood among the Atlanta Police Department sworn personnel.
- Since 2003, APF has provided vital strategic support to the Mayor, the Chief of Police and the Atlanta Police Department on the forefront of public safety's future direction. In 2015, Atlanta was named a model city by President Obama's task force for 21st Century Policing – one of only 15 jurisdictions to be given that status out of 18,000 reviewed.
- Our work is far from over. Through our public-private partnership model, we will continue to pursue, privately fund and implement programming that creates a safe and just city for every citizen of Atlanta, driving out crime and enhancing the safety of our neighborhoods.

# WAYS TO CONTRIBUTE

## SUPPORT PUBLIC SAFETY FIRST

Support APF's broad array of 21st century public safety initiatives, including but not limited to training, technology, and program support



VISIT [ATLANTAPOLICEFOUNDATION.ORG](http://ATLANTAPOLICEFOUNDATION.ORG) TO LEARN MORE

## SEE SOMETHING, SAY SOMETHING



The Atlanta Police Foundation manages the metro wide program under the supervision of a designated APD sergeant. The CSGA tip line enables citizens to play a direct role in reducing crime by submitting anonymous tips that lead to a criminal arrest.



Anonymous tips can be submitted by calling 404-577-TIPS (8477), online at [www.stopcrimeatl.org](http://www.stopcrimeatl.org) or by texting CSA and the tip to CRIMES (274637). Tips that assist with arrests may be eligible for up to a \$2,000 reward.

## FIGHT CRIME WITH YOUR TAX CREDIT

New law enables taxpayers to allocate portion of state income tax to fight crime

ALL FUNDS WILL BE USED TO DIRECTLY SUPPORT APD OFFICERS – BONUSES, TRAINING, AND EQUIPMENT.

TO APPLY, PLEASE VISIT OUR WEBSITE OR SCAN QR CODE

[WWW.LESSCRIMEACT.COM](http://WWW.LESSCRIMEACT.COM)



@atlpolicefdn   

191 Peachtree Street, NE, Suite 191 | Atlanta, GA 30303 | [AtlantaPoliceFoundation.org](http://AtlantaPoliceFoundation.org) | 404.586.0180